



# ROOSEVELT

***DAG: DESIGN DEVELOPMENT UPDATE***

*December 4, 2014*

Roosevelt HS Modernization – Presentation to DAG





ROOSEVELT HIGH SCHOOL  
CONFERENCIA  
FAMILIAR LATINA  
1 DE MARZO 8/3 PM

*"Home of the Roughriders"*

↑ School-Based Health Center

→ School-Based Health Center

♿  
WHEELCHAIR  
ACCESSIBLE  
PARKING

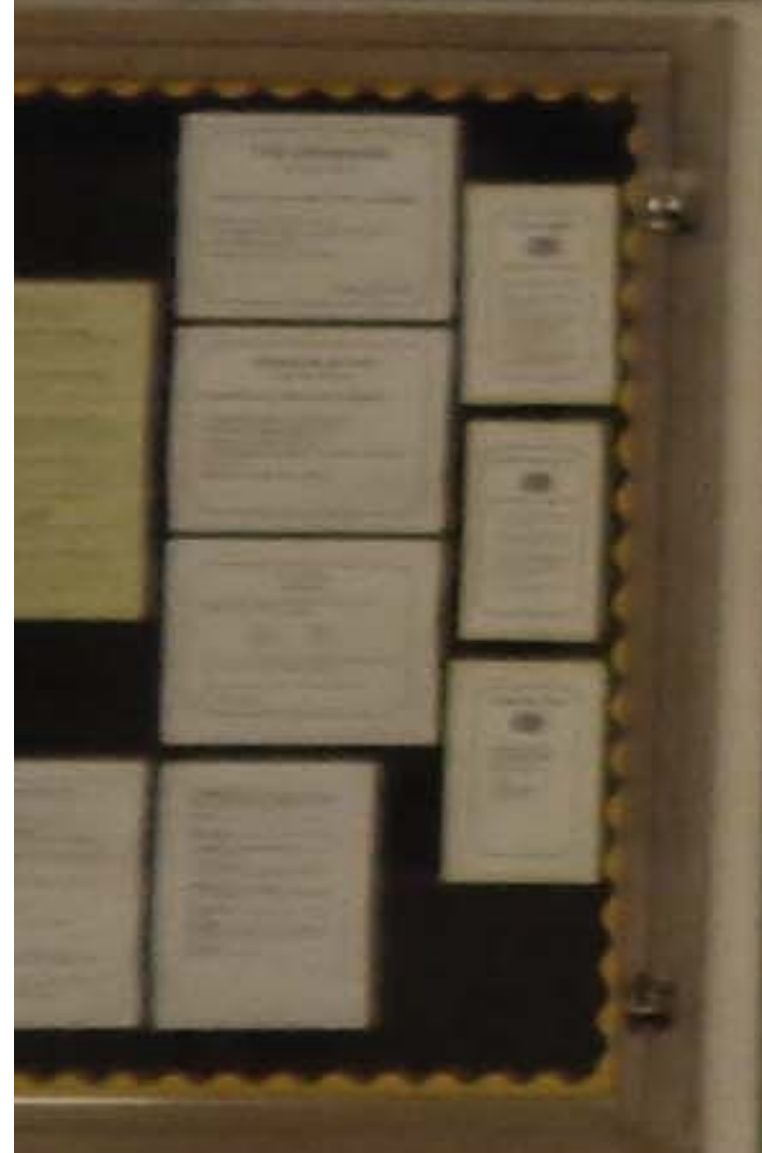




*bassetti*  
architects



WELCOME FRESHMAN  
CLASS OF 2017  
GO RIDERS



WELCOME TO  
ROOSEVELT HIGH SCHOOL  
HOME OF THE MIGHTY RIDERS

ALL VISITORS PLEASE GO TO THE MAIN OFFICE AND  
CHECK IN TO RECEIVE A VISITOR'S PASS

PLEASE REMOVE ALL HATS AND HEAD WEAR UPON  
ENTERING THE BUILDING

THANK YOU!  
"IT'S ALWAYS A GREAT DAY TO BE A RIDER!"



ADMINISTRATION

WELCOME TO ROOSEVELT HIGH SCHOOL

HOME OF THE ROUGH RIDERS

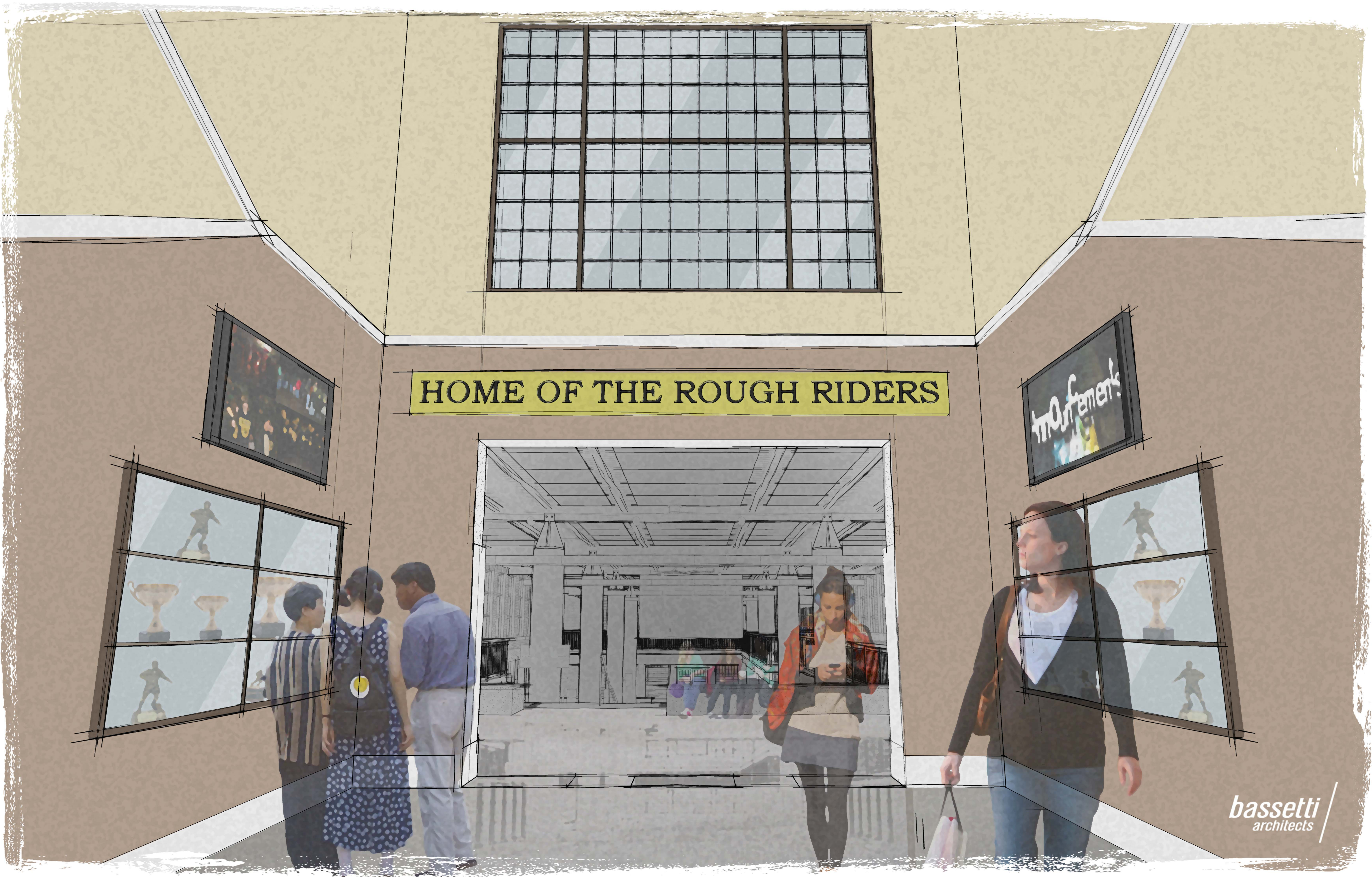


*bassetti*  
architects



# HOME OF THE ROUGH RIDERS

inOufemenk











*bassetti*  
architects













TEDDY'S BISTRO

*bassetti*  
architects









*bassetti*  
architects









ROOSEVELT

PICK-UP

PICK-UP

ORDER









ROUGH RIDERS

**RR**  
*Roosevelt Rough Riders*

TEAMWORK  
 MAKES THE  
 DREAM WORK

Graduation

bassetti  
architects





REVELT HIGH SCHOOL

*bassetti*  
architects









You can never have an impact on society  
if you have not changed yourself."  
- Nelson Mandela

*bassetti*  
architects







# CONCESSIONS







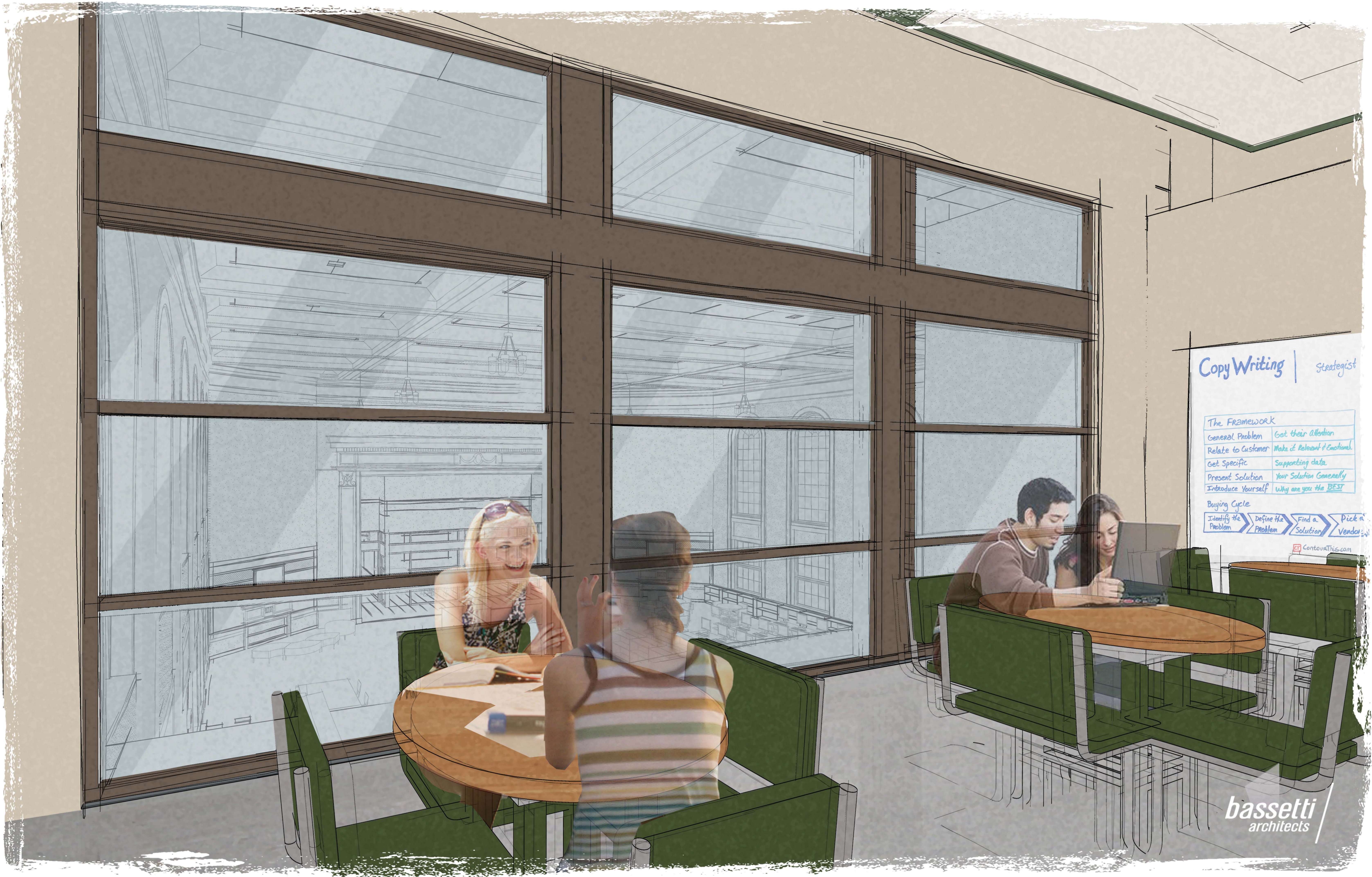
*bassetti*  
architects





*bassetti*  
architects

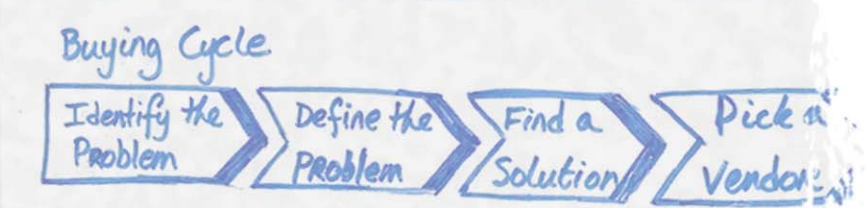




## Copy Writing | Strategist

The Framework

General Problem	Get their Attention
Relate to Customer	Make it Relevant & Emotional
Get Specific	Supporting data
Present Solution	Your Solution Generally
Introduce Yourself	Why are you the BEST



ContourThis.com





# RIDERSPACES

**R** OOSEVELT

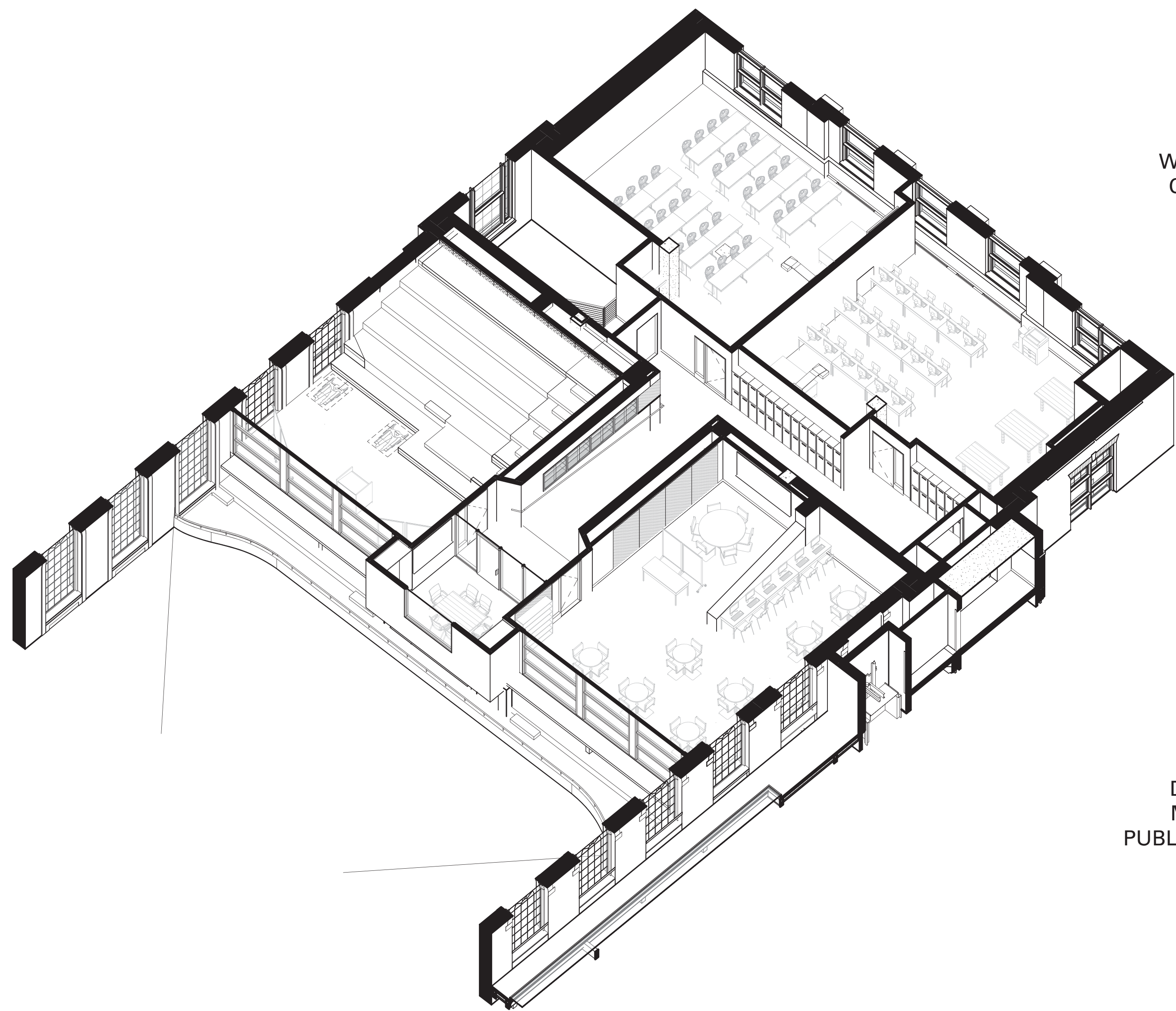
**I** NNOVATION

**D** ESIGN

**E** NGINEERING

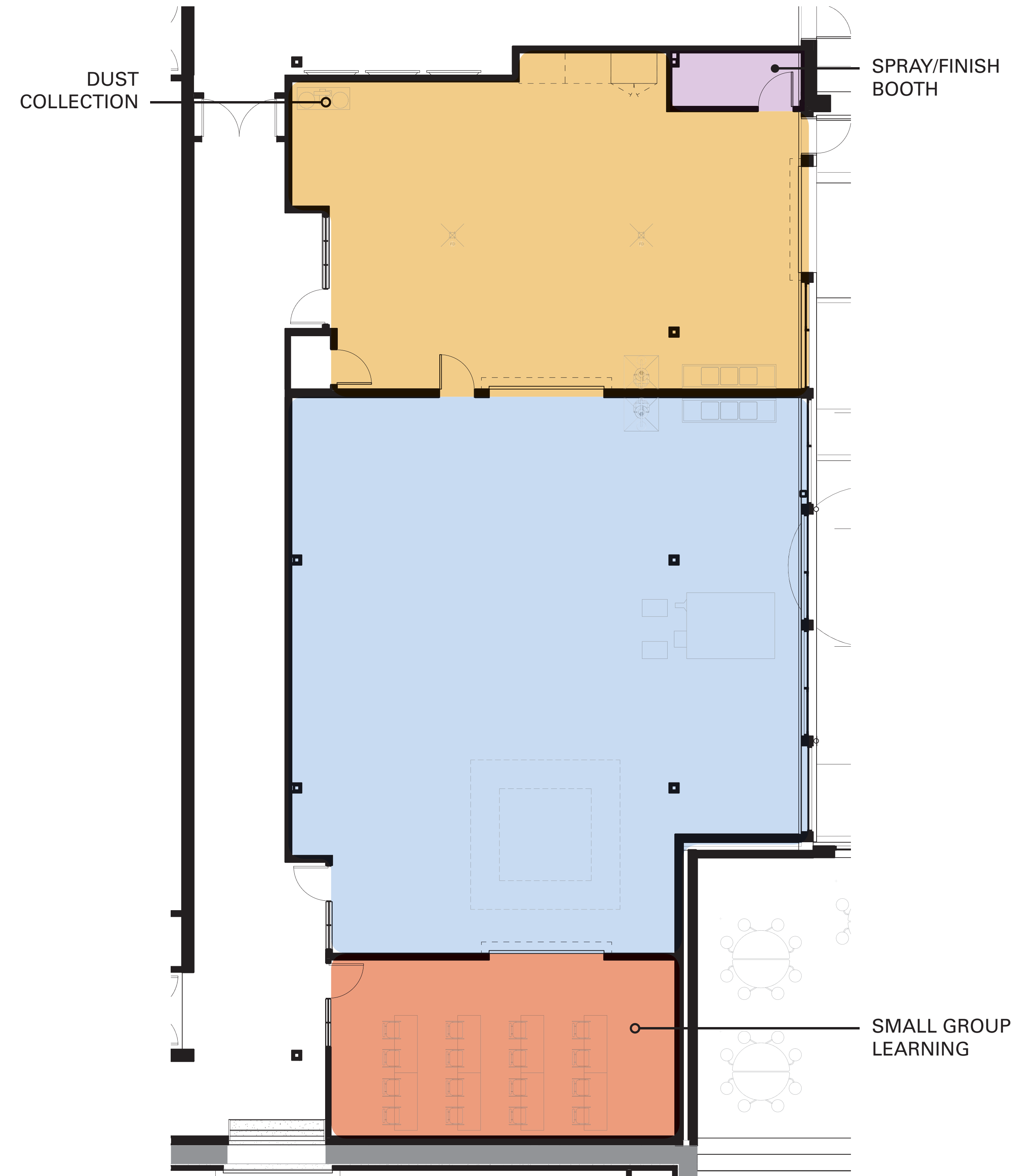
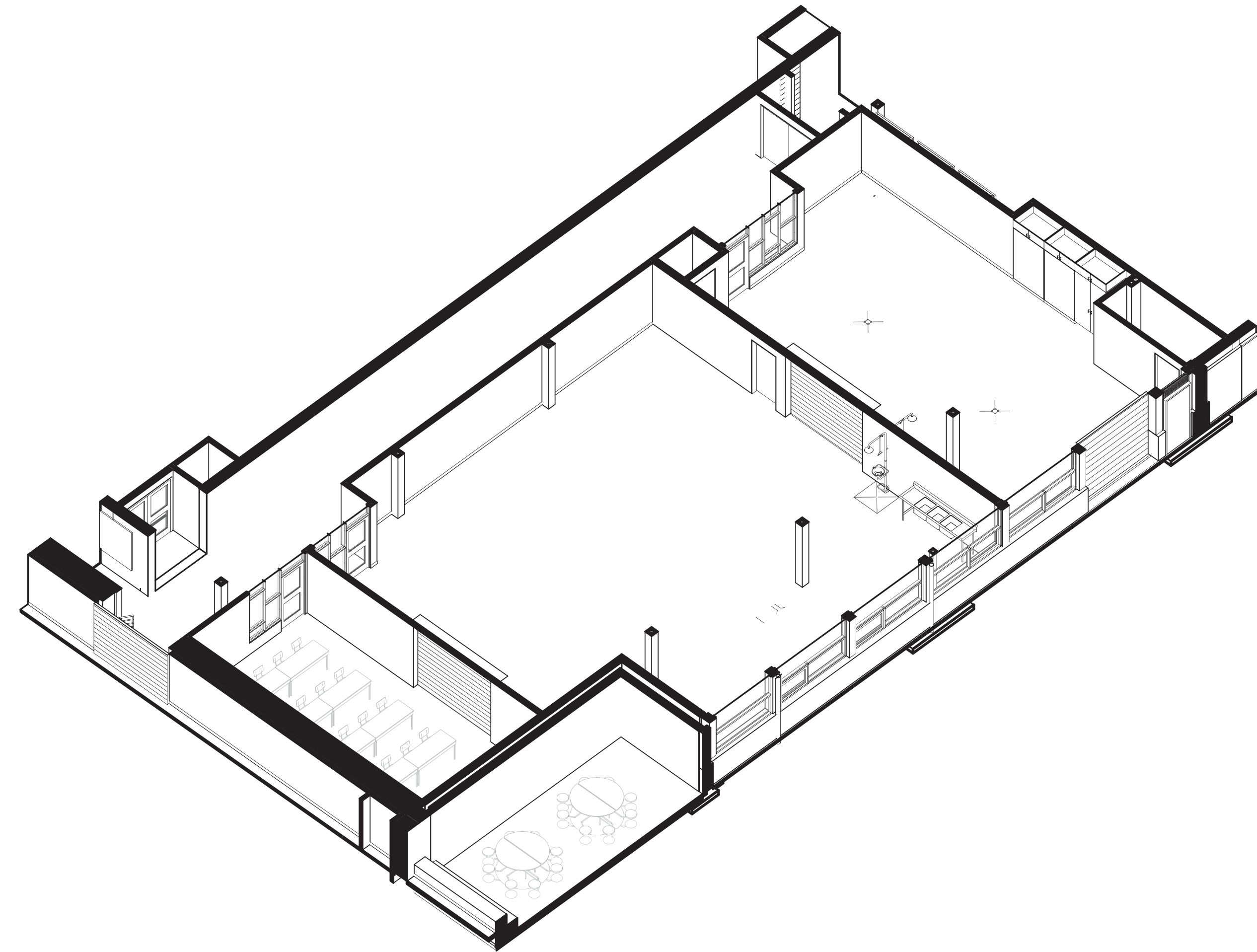
**R** ESEARCH





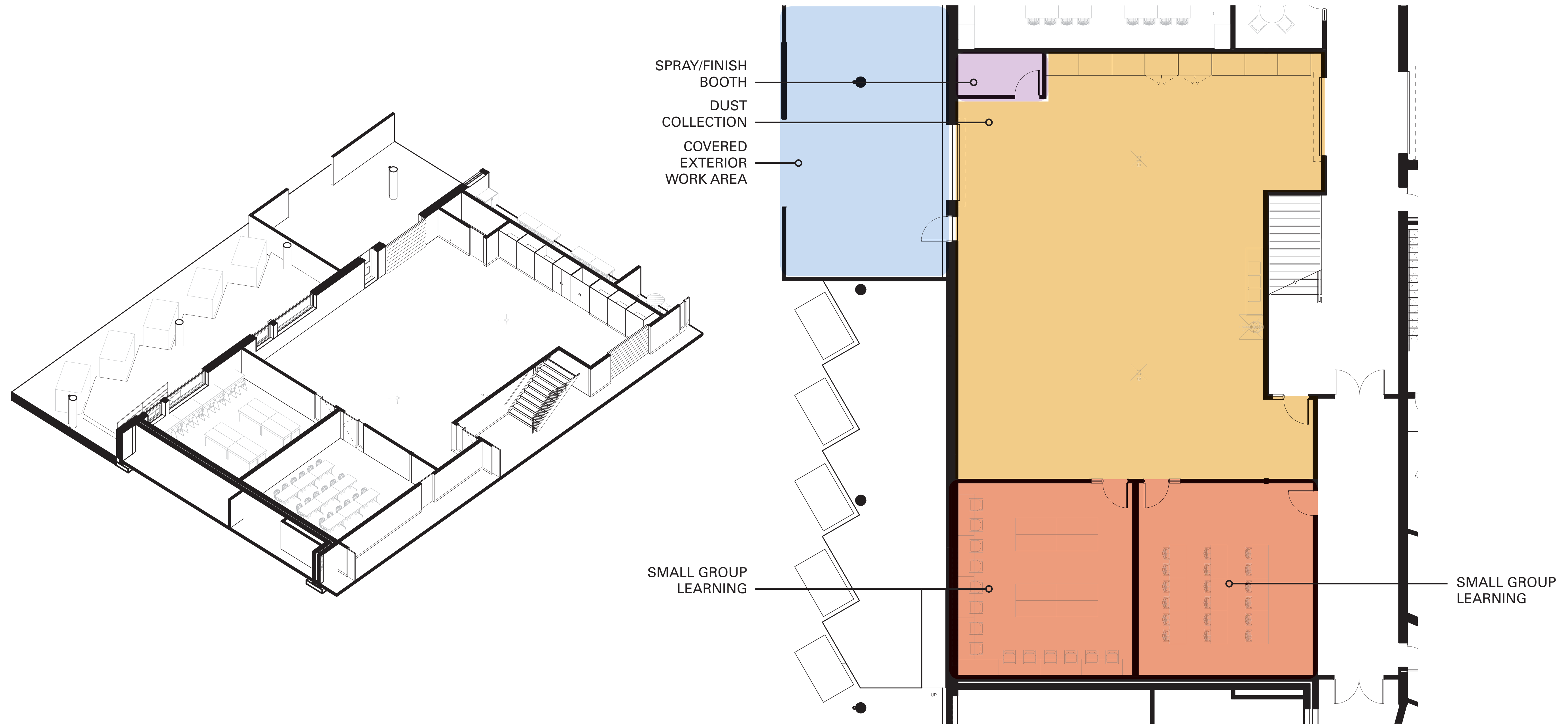
RIDER SPACE: ROUGH WRITERS





RIDER SPACE: WEST





RIDER SPACE: EAST





# PHASES







- Preconstruction (Spring 2015)
- Phase I (Spring 2015-Summer 2016)
  - New construction on gymnasium, theater, commons/cafeteria, classroom wings, career pathway spaces & library conversion
- Phase II (Summer 2016-Summer 2017)
  - Renovation of main building including offices, classrooms, rest of commons/cafeteria
- Phase III (Summer 2017-Winter 2017)
  - Final demolition of buildings and sitework

## TIMELINE | Phases (Summers)

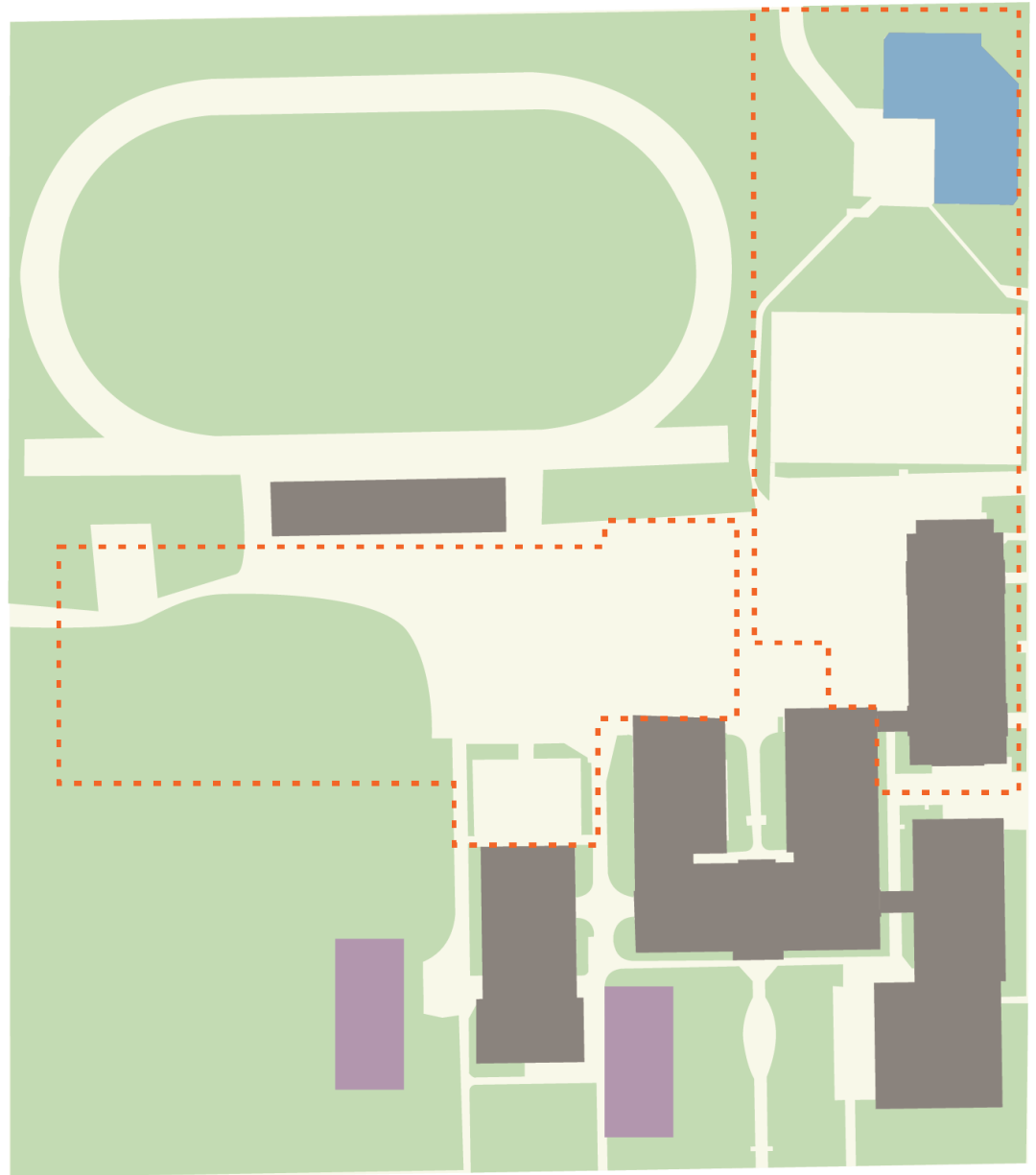




# SPRING 2015 – SUMMER 2015






-  Contactor sets up in shops
-  Fences go up
-  Gymnasium, music bldg, boiler demolished
-  Temporary facilities constructed
-  New construction begins
-  Renovation begins

## TIMELINE | Pre-Construction

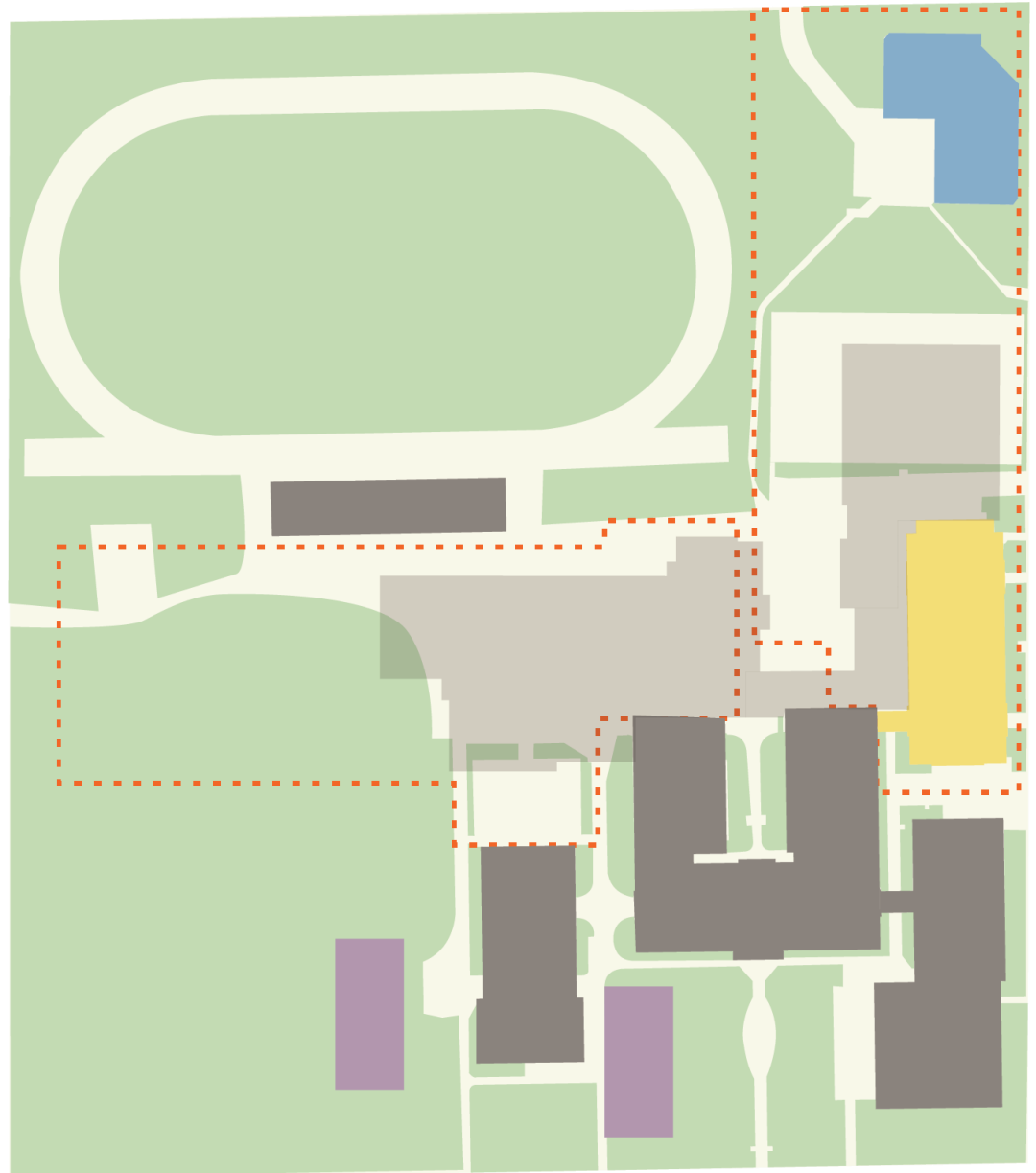




# 2015 –2016 SCHOOL YEAR







-  Contactor on-site
-  Construction fence up throughout school year
-  Temporary facilities open
-  Construction proceeds on gymnasium, new auditorium
-  Auditorium → library renovation begins

## TIMELINE | Phase I

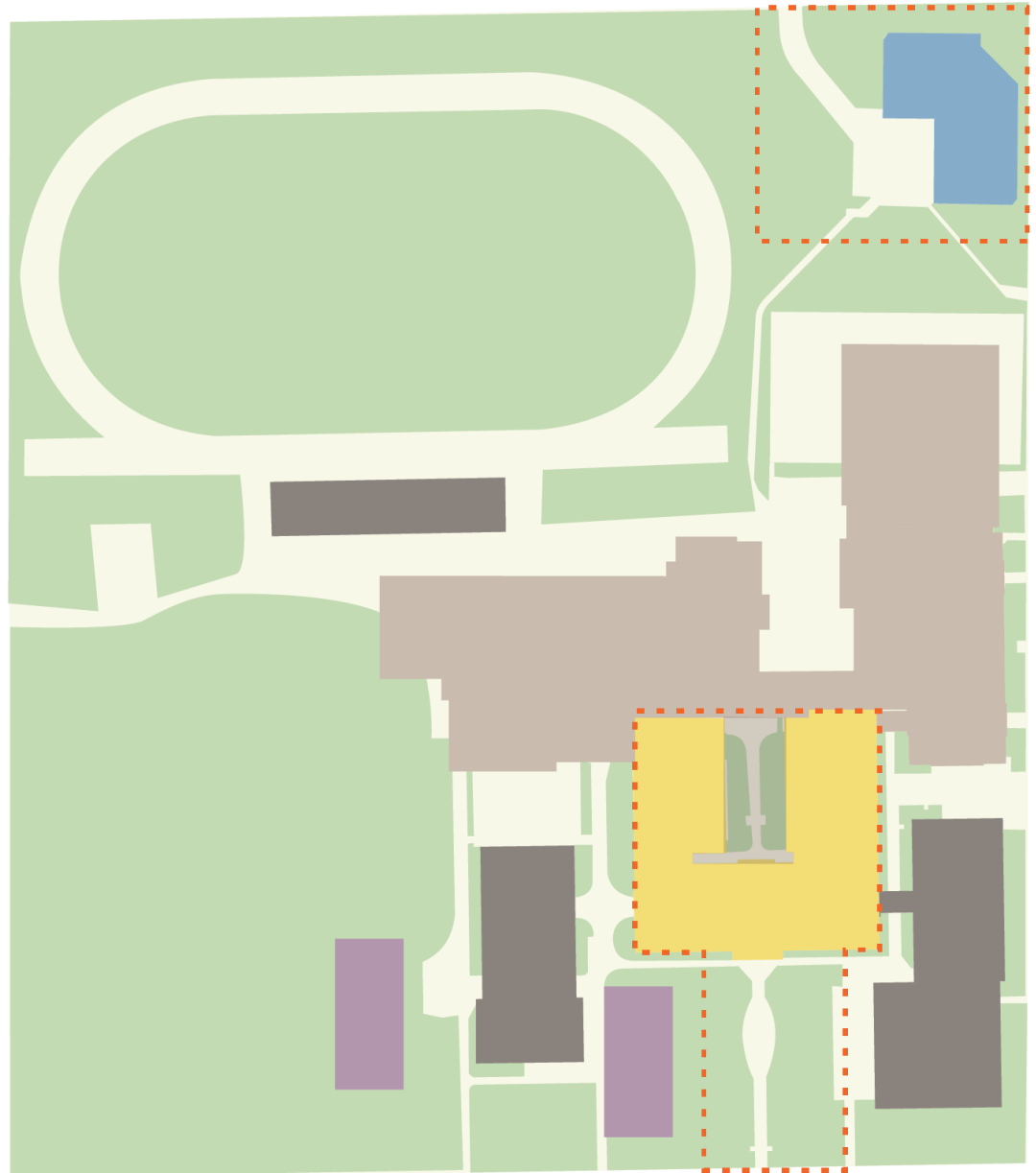




# 2016 –2017 SCHOOL YEAR

-  Contractor remains in shops
-  Construction fence moves
-  New auditorium & gym wings open
-  Temporary facilities remain
-  Construction proceeds on second half of commons
-  Renovations in 1921 building begin

## TIMELINE | Phase II





# SUMMER 2017 – WINTER 2017

- Shops, library, cafeteria wings demolished
- Construction fence removed
- Temporary facilities removed
- Rest of new commons opens
- Building work is complete
- Site work and landscaping occurs

## TIMELINE | Phase III

